

2008 Carbon Dioxide (CO₂) Budget



Vegetation, soil, plankton and ocean water **REMOVES**
6-7 BILLION TONS of CO₂ a YEAR:

Human activities and deforestation **ADDS**
10 BILLION TONS of CO₂ a YEAR



The imbalance of 3 to 4 BILLION TONS of CO₂ a year accumulates in the atmosphere.
This is the fundamental imbalance that causes climate change.

1 US Ton = 2,000 pounds = 907 kilograms

1 African male Elephant = 15,000 pounds = 6.8 US tons

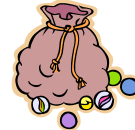
1 US yellow school bus = 20,000 pounds = 10 US tons = 40 feet long.

1 marble = 100 million

40 marbles = 4 billion

60 marbles = 6 billion

70 marbles = 7 billion



Nine zeros in a billion.

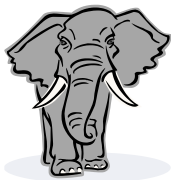
One thousand million = one billion

1 mile = 5,280 feet

Earth is 24,901 miles circumference at the equator

Moon is on average 240,000 miles away

Mars is on average 35 million miles away



1 billion tons of CO₂ = 147,058,823 African Elephants

4 billion tons of CO₂ = 588,235,294 African Elephants

6 billion tons of CO₂ = 882,352,938 African Elephants

7 billion tons of CO₂ = 1,029,411,764 African Elephants

10 billion tons of CO₂ = 1,470,588,230 African Elephants

1 billion tons of CO₂ = 100,000,000 school buses = 757,575 miles of school busses

4 billion tons of CO₂ = 400,000,000 school buses = 3,030,300 miles of school busses

6 billion tons of CO₂ = 600,000,000 school buses = 4,545,450 miles of school busses

7 billion tons of CO₂ = 700,000,000 school buses = 5,303,025 miles of school busses

10 billion tons of CO₂ = 100,000,000 school buses = 7,575,750 miles of school busses

In 2008, humans added the same amount of CO₂ (by weight) to the atmosphere
as line of school busses (by weight) that go to the moon and back 31 ½ times